

Sample Information

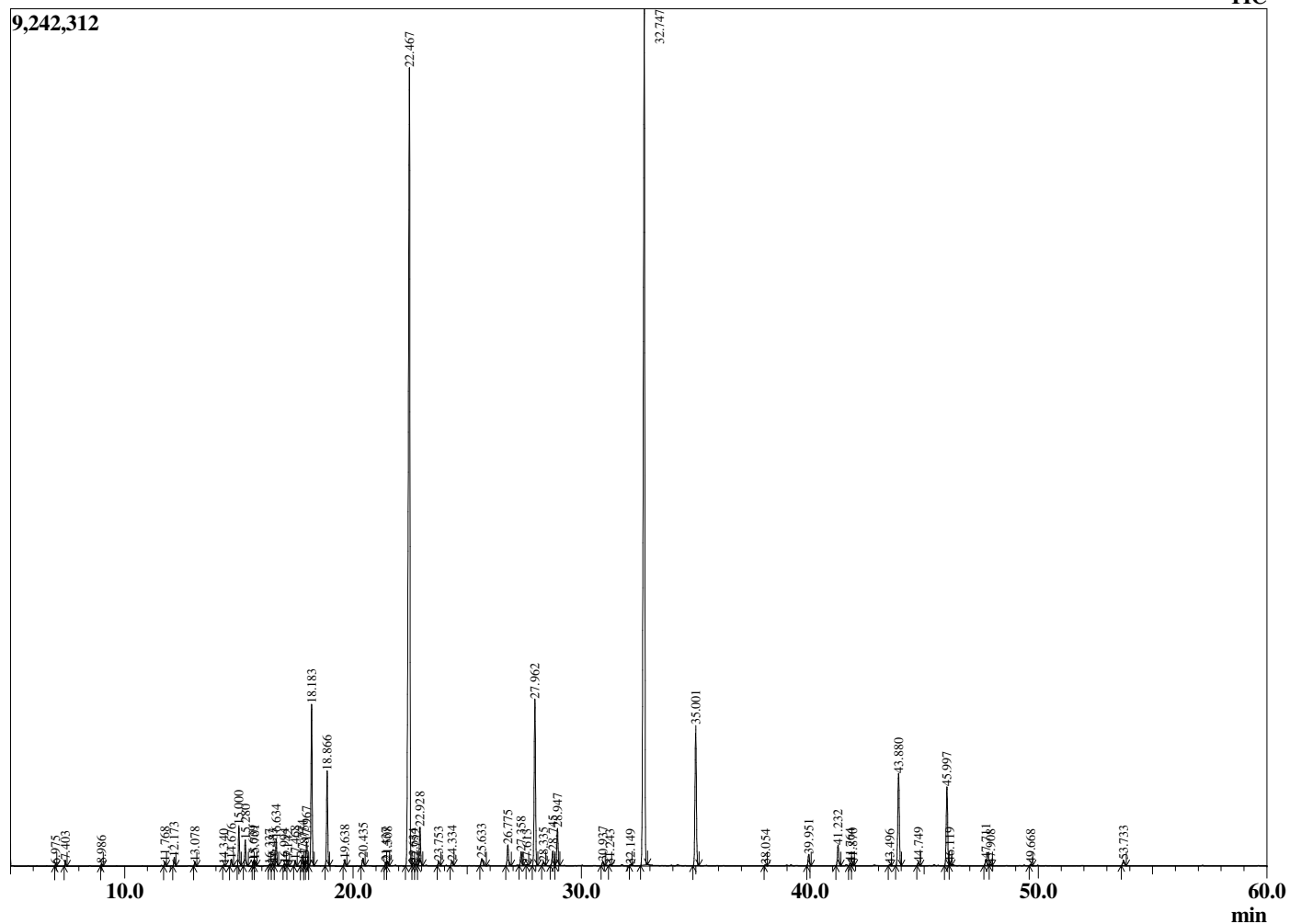
Analyzed by : Dr. Robert S. Pappas
 Analyzed : 2/10/2019 3:36:33 AM
 Sample Type : Essential Oil
 Sample Name : Lavender, Greece - Revive EO
 Sample ID : DOB1127P
 Injection Volume : 0.10
 Instrument ID : GC-3



Peak Report TIC

R.Time	Name	Area%
6.975	Butyl acetate	0.03
7.403	Hexyl methyl ether	0.11
8.986	n-Hexanol	0.04
11.768	alpha-Thujene	0.11
12.173	alpha-Pinene	0.22
13.078	Camphene	0.11
14.340	Sabinene	0.03
14.676	1-Octen-3-ol	0.19
15.000	3-Octanone	1.09
15.280	Myrcene	0.71
15.639	Butyl butyrate	0.13
15.701	3-Octanol	0.15
16.337	alpha-Phellandrene	0.02
16.483	delta-3-Carene	0.07
16.634	Hexyl acetate	0.72
16.994	alpha-Terpinene	0.06
17.142	ortho-Cymene	0.03
17.468	para-Cymene	0.16
17.774	Limonene	0.31
17.875	beta-Phellandrene	0.15
17.967	1,8-Cineole	0.71
18.183	cis-beta-Ocimene	4.74
18.866	trans-beta-Ocimene	2.72
19.638	gamma-Terpinene	0.19
20.435	cis-Linalool oxide (furanoid)	0.26
21.437	Terpinolene	0.09
21.508	trans-Linalool oxide (furanoid)	0.14
22.467	Linalool	31.11
22.634	Hotrienol	0.09
22.752	Hexyl propionate	0.06
22.928	1-Octen-3-yl acetate	1.19
23.753	3-Octyl acetate	0.13
24.334	allo-Ocimene	0.15
25.633	Camphor	0.31
26.775	Lavandulol	0.68
27.358	Borneol	0.45
27.613	Undeca-1,3,5-triene	0.02
27.962	Terpinen-4-ol	5.50
28.335	Cryptone	0.12
28.745	Hexyl butyrate	0.50
28.947	alpha-Terpineol	1.22
30.937	Nerol	0.13
31.243	Bornyl formate	0.03
32.149	Cuminal	0.03
32.747	Linalyl acetate	31.94
35.001	Lavandulyl acetate	4.68
38.054	Hexyl tiglate	0.03
39.951	Neryl acetate	0.40
41.232	Geranyl acetate	0.71
41.764	Hexyl hexanoate	0.08
41.870	7-epi-Sesquithujene	0.06
43.496	cis-alpha-Bergamotene	0.03
43.880	beta-Caryophyllene	3.50
44.749	trans-alpha-Bergamotene	0.10
45.997	trans-beta-Farnesene	2.82
46.119	alpha-Humulene	0.08
47.711	Germacrene D	0.25
47.908	Unidentified	0.03
49.668	gamma-Cadinene	0.05
53.733	Caryophyllene oxide	0.21
		100.00

Chromatogram Lavender, Greece - Revive EO



Comments:

The analysis of this Lavender, Greece batch sample meets the expected chemical profile for authentic essential oil of *Lavandula angustifolia*. No contamination or adulteration was detected. The results provided in this GCMS quality analysis reflect the chemical composition of the oil and lot referenced above on the date of analysis.