

Sample Information

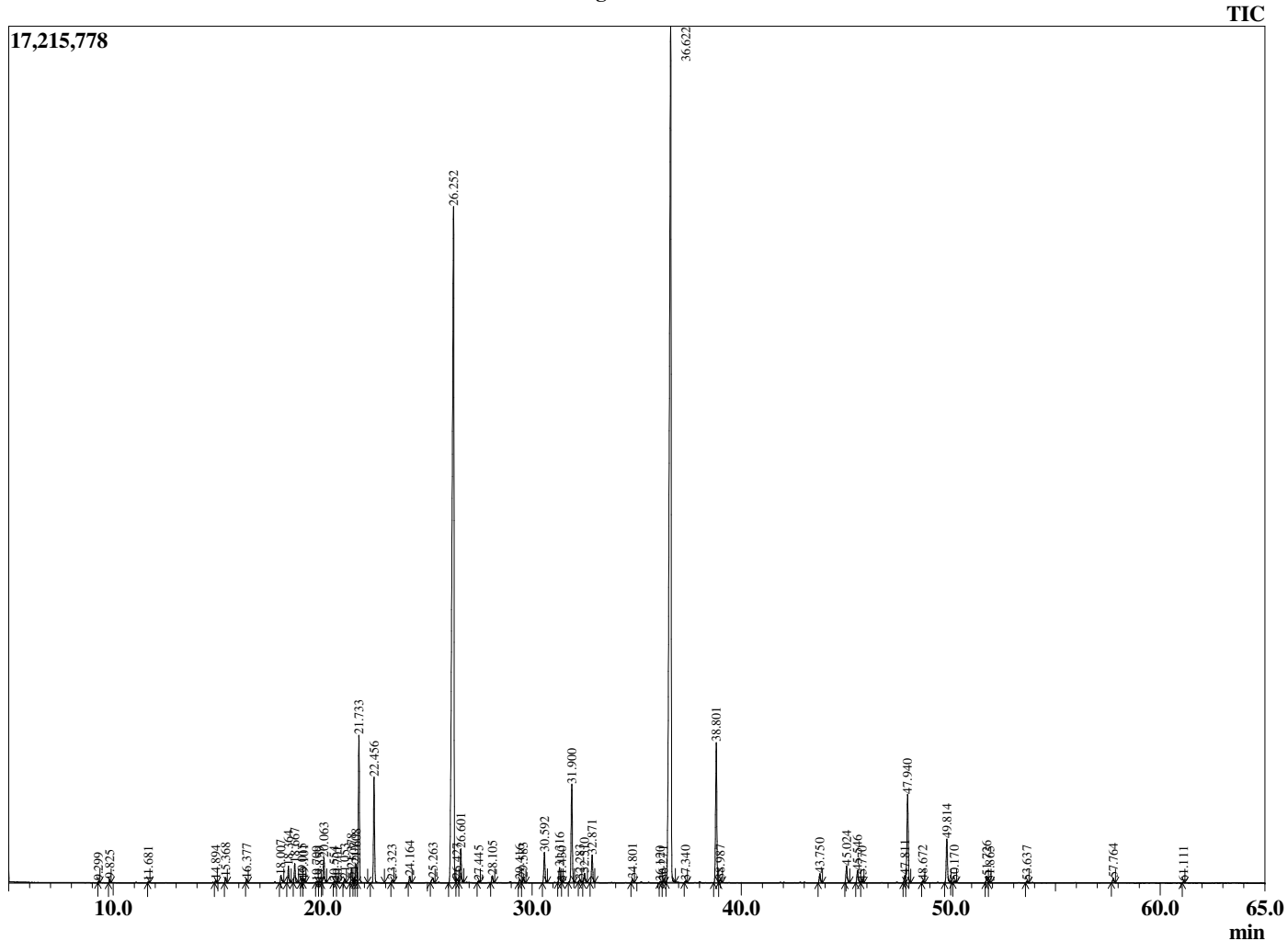
Analyzed by : Dr. Robert S. Pappas
 Analyzed : 01/4/2019 11:31:53 PM
 Sample Type : Essential Oil
 Sample Name : Lavender Oil
 Sample ID : DOB1127M
 Injection Volume : 0.10
 Instrument ID: : GC-2



Peak Report TIC

R.Time	Name	Area%
9.299	Butyl acetate	0.03
9.825	1-Methoxyhexane	0.07
11.681	Hexanol	0.02
14.894	alpha-Thujene	0.06
15.368	alpha-Pinene	0.13
16.377	Camphene	0.09
18.007	1-Octen-3-ol	0.24
18.364	3-Octanone	0.44
18.667	Myrcene	0.52
19.015	Butyl butyrate	0.11
19.101	3-Octanol	0.07
19.709	Pseudolimonene	0.02
19.859	alpha-Phellandrene	0.02
20.063	Hexyl acetate	0.77
20.554	alpha-Terpinene	0.02
20.701	meta-Cymene	0.02
21.053	para-Cymene	0.11
21.378	Limonene	0.37
21.507	beta-Phellandrene	0.13
21.608	1,8-Cineole	0.50
21.733	Z-beta-Ocimene	3.97
22.456	E-beta-Ocimene	2.87
23.323	gamma-Terpinene	0.08
24.164	cis-Linalool oxide (furanoid)	0.18
25.263	Terpinolene + trans-Linalool oxide (furanoid)	0.19
26.252	Linalool	31.91
26.427	Hexyl propionate	0.14
26.601	1-Octen-3-yl acetate	0.96
27.445	3-Octyl acetate	0.05
28.105	allo-Ocimene	0.20
29.416	Hexyl isobutyrate	0.10
29.583	Camphor	0.15
30.592	Lavandulol	0.91
31.316	Borneol	0.46
31.430	Galbanolene	0.02
31.900	Terpinen-4-ol	3.04
32.283	Cryptone	0.10
32.510	Hexyl butyrate	0.28
32.871	alpha-Terpineol	0.83
34.801	Nerol	0.11
36.120	Cuminaldehyde	0.03
36.271	Unidentified	0.05
36.622	Linalyl acetate	38.66
37.340	Unidentified	0.05
38.801	Lavandulyl acetate	4.35
38.987	Bornyl acetate	0.10
43.750	Neryl acetate	0.28
45.024	Geranyl acetate	0.54
45.546	Hexyl hexanoate	0.40
45.770	7-epi-Sesquithujene	0.04
47.811	alpha-Santalene	0.23
47.940	beta-Caryophyllene	2.94
48.672	trans-alpha-Bergamotene	0.06
49.814	E-beta-Farnesene	1.43
50.170	alpha-Humulene	0.06
51.726	Germacrene D	0.21
51.865	Farnesene isomer	0.03
53.637	gamma-Cadinene	0.05
57.764	Caryophyllene oxide	0.14
61.111	epi-alpha-Cadinol	0.02
		100.00

Chromatogram Lavender Oil



Comments:

The analysis of this Lavender batch sample meets the expected chemical profile for authentic essential oil of *Lavandula angustifolia*. No contamination or adulteration was detected.

The results provided in this GCMS quality analysis reflect the chemical composition of the oil and lot referenced above on the date of analysis.