

Sample Information

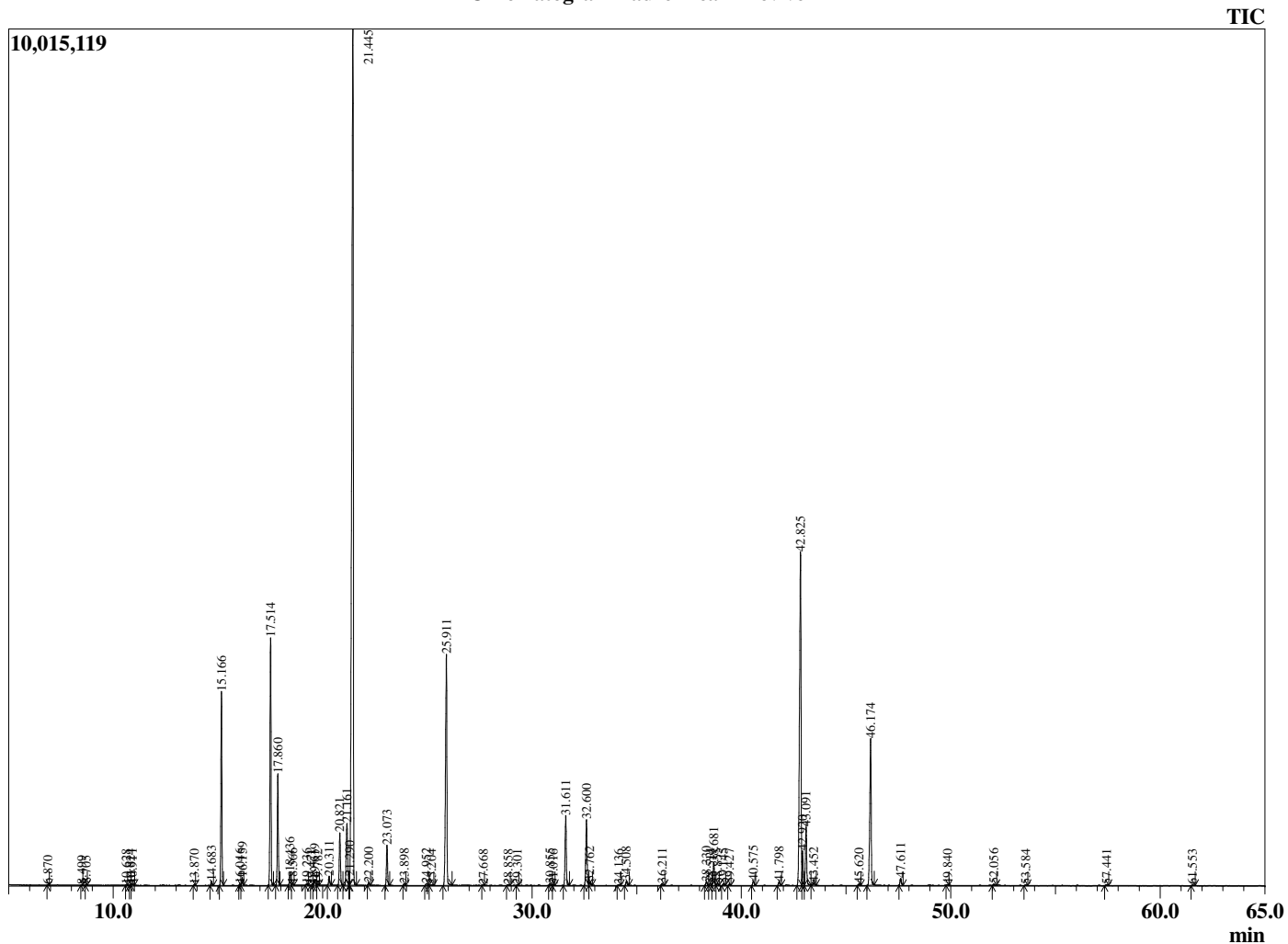
Analyzed by : Dr. Robert S. Pappas  
 Analyzed : 8/15/2019 4:28:08 AM  
 Sample Type : Essential Oil  
 Sample Name : Laurel Leaf - Revive  
 Sample ID : E0C0701D  
 Injection Volume : 0.10  
 Instrument ID : GC-2



Peak Report TIC

R.Time	Name	Area%
6.870	Methyl pyrrole	0.01
8.499	Isopropyl isobutyrate	0.01
8.705	Hexanal	0.02
10.628	Ethyl 2-methylbutyrate	0.02
10.824	Ethyl isovalerate	0.02
10.911	Hex-3(Z)-enol	0.05
13.870	Isobutyl isobutyrate	0.02
14.683	alpha-Thujene	0.11
15.166	alpha-Pinene	5.30
16.046	alpha-Fenchene	0.04
16.159	Camphene	0.21
17.514	Sabinene	7.39
17.860	beta-Pinene	3.20
18.436	Myrcene	0.38
18.566	dehydro-1,8-Cineole	0.05
19.236	Isobutyl 2-methylbutyrate	0.05
19.471	Pseudolimonene	0.02
19.619	alpha-Phellandrene	0.18
19.782	delta-3-Carene	0.02
20.311	alpha-Terpinene	0.28
20.821	para-Cymene	1.74
21.161	Limonene	2.56
21.290	beta-Phellandrene	0.14
21.445	1,8-cineole	37.62
22.200	trans-beta-Ocimene	0.09
23.073	gamma-Terpinene	1.24
23.898	trans-Sabinene hydrate	0.06
24.952	Terpinolene	0.09
25.204	2-Nonanone	0.03
25.911	Linalool	8.72
27.668	cis-para-Menth-2-en-1-ol	0.02
28.858	trans-Pinocarveol	0.04
29.301	Camphor	0.02
30.855	delta-Terpineol	0.06
31.016	Borneol	0.02
31.611	Terpinen-4-ol	2.38
32.600	alpha-Terpineol	2.32
32.762	Estragole	0.12
34.136	alpha-Fenchyl acetate	0.04
34.508	Nerol	0.15
36.211	Linalyl acetate	0.07
38.330	Unidentified	0.12
38.514	alpha-Terpinyl acetate	0.06
38.681	Bornyl acetate	0.80
38.855	Isobornyl acetate	0.06
39.145	2-Undecanone	0.08
39.427	beta-Terpinyl acetate	0.05
40.575	delta-Terpinyl acetate	0.16
41.798	Unidentified	0.12
42.825	alpha-Terpinyl acetate	14.24
42.920	gamma-Terpinyl acetate	1.04
43.091	Eugenol	2.07
43.452	Neryl acetate	0.10
45.620	beta-Elemene	0.06
46.174	Methyleugenol	5.69
47.611	beta-Caryophyllene	0.27
49.840	alpha-Humulene	0.03
52.056	trans-Methyl isoeugenol	0.06
53.584	delta-Cadinene	0.03
57.441	Caryophyllene oxide	0.04
61.553	Cubanol	0.04
		100.00

Chromatogram Laurel Leaf - Revive



Comments:

The analysis of this Laurel Leaf batch sample meets the expected chemical profile for authentic essential oil of

*Laurus nobilis*. No contamination or adulteration was detected.

The results provided in this GCMS quality analysis reflect the chemical composition of the oil and lot referenced above on the date of analysis.

©Copyright 2019 by Essential Oil University. All rights reserved. Any publishing, copying, use, dissemination, or distribution of this report, including online, without the express written permission of Essential Oil University is strictly prohibited.