

Sample Information

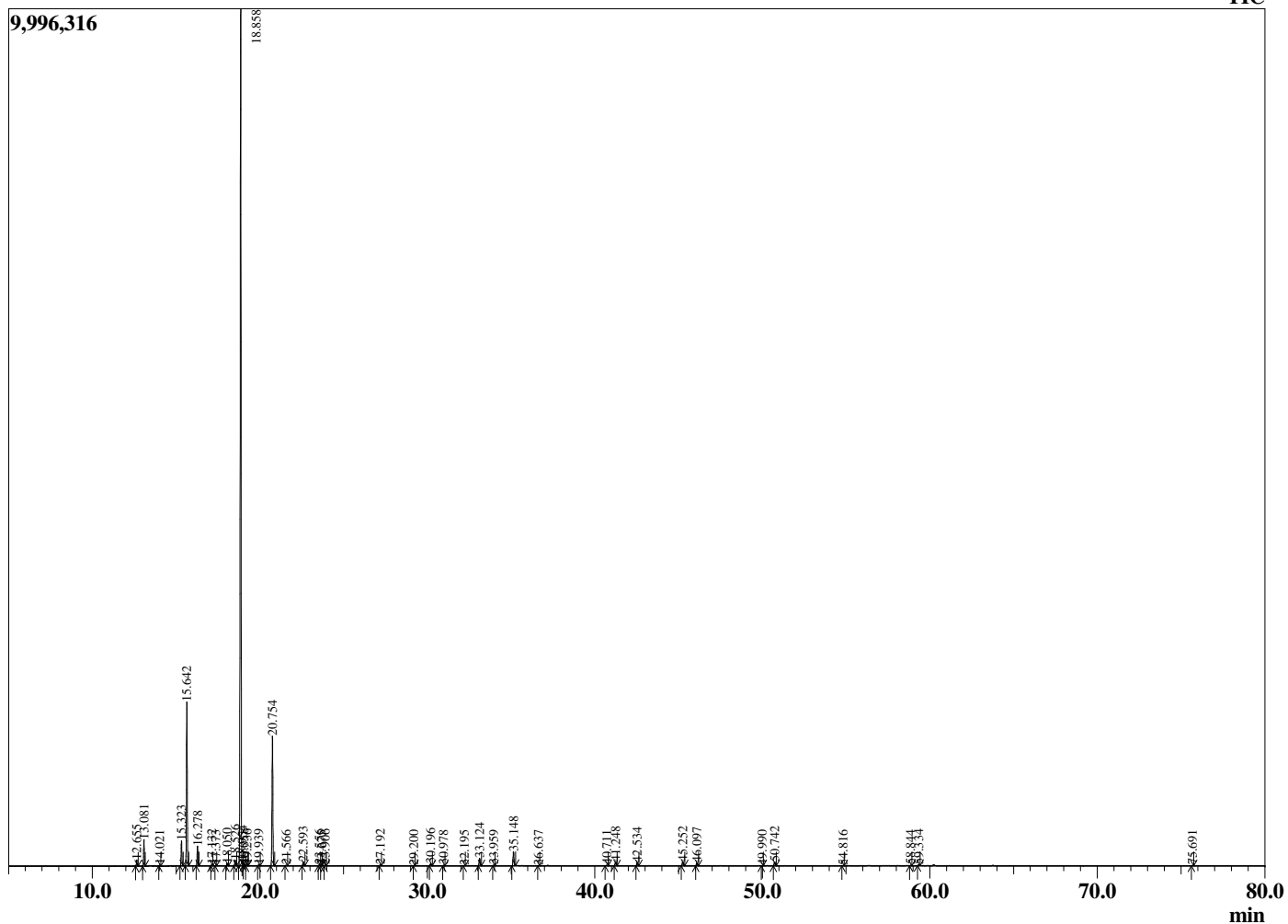
Analyzed by : Dr. Robert S. Pappas  
 Analyzed : 11/22/2019 3:17:42 AM  
 Sample Type : Essential Oil  
 Sample Name : Lemon - Revive  
 Sample ID : DOC1028E  
 Injection Volume : 0.10  
 Instrument ID : GC-3



Peak Report TIC

R.Time	Name	Area%
12.655	alpha-Thujene	0.38
13.081	alpha-Pinene	1.73
14.021	Camphene	0.06
15.323	Sabinene	1.74
15.642	beta-Pinene	11.42
16.278	Myrcene	1.37
17.132	Octanal	0.07
17.373	alpha-Phellandrene	0.03
18.050	alpha-Terpinene	0.17
18.526	para-Cymene	0.43
18.858	Limonene	67.53
18.954	beta-Phellandrene	0.07
19.058	1,8-Cineole	0.08
19.236	cis-beta-Ocimene	0.05
19.939	trans-beta-Ocimene	0.09
20.754	gamma-Terpinene	9.97
21.566	trans-Sabinene hydrate	0.05
22.593	Terpinolene	0.33
23.556	Linalool	0.09
23.675	cis-Sabinene hydrate	0.02
23.906	Nonanal	0.09
27.192	Citronellal	0.08
29.200	Terpinen-4-ol	0.02
30.196	alpha-Terpineol	0.18
30.978	Decanal	0.04
32.195	Nerol	0.03
33.124	Neral	0.64
33.959	Geraniol	0.04
35.148	Geranial	1.21
36.637	Thymol	0.03
40.711	Eugenol	0.05
41.248	Neryl acetate	0.36
42.534	Geranyl acetate	0.31
45.252	beta-Caryophyllene	0.39
46.097	trans-alpha-Bergamotene	0.27
49.990	Bicyclogermacrene	0.02
50.742	beta-Bisabolene	0.37
54.816	Spathulenol	0.03
58.844	delta-Cadinol	0.04
59.334	alpha-Cadinol	0.07
75.691	Citropten	0.04
		100.00

Chromatogram Lemon - Revive



Comments:

The analysis of this Lemon, Italy batch sample meets the expected chemical profile for authentic essential oil of *Citrus limon*. No contamination or adulteration was detected.

The results provided in this GCMS quality analysis reflect the chemical composition of the oil and lot referenced above on the date of analysis.