

Sample Information

Analyzed by : Dr. Robert S. Pappas
 Analyzed : 12/8/2018 9:59:10 PM
 Sample Type : Essential Oil
 Sample Name : Orange Oil, Sweet
 Sample ID : RA1108N
 Injection Volume : 0.10
 Instrument ID : GC-2

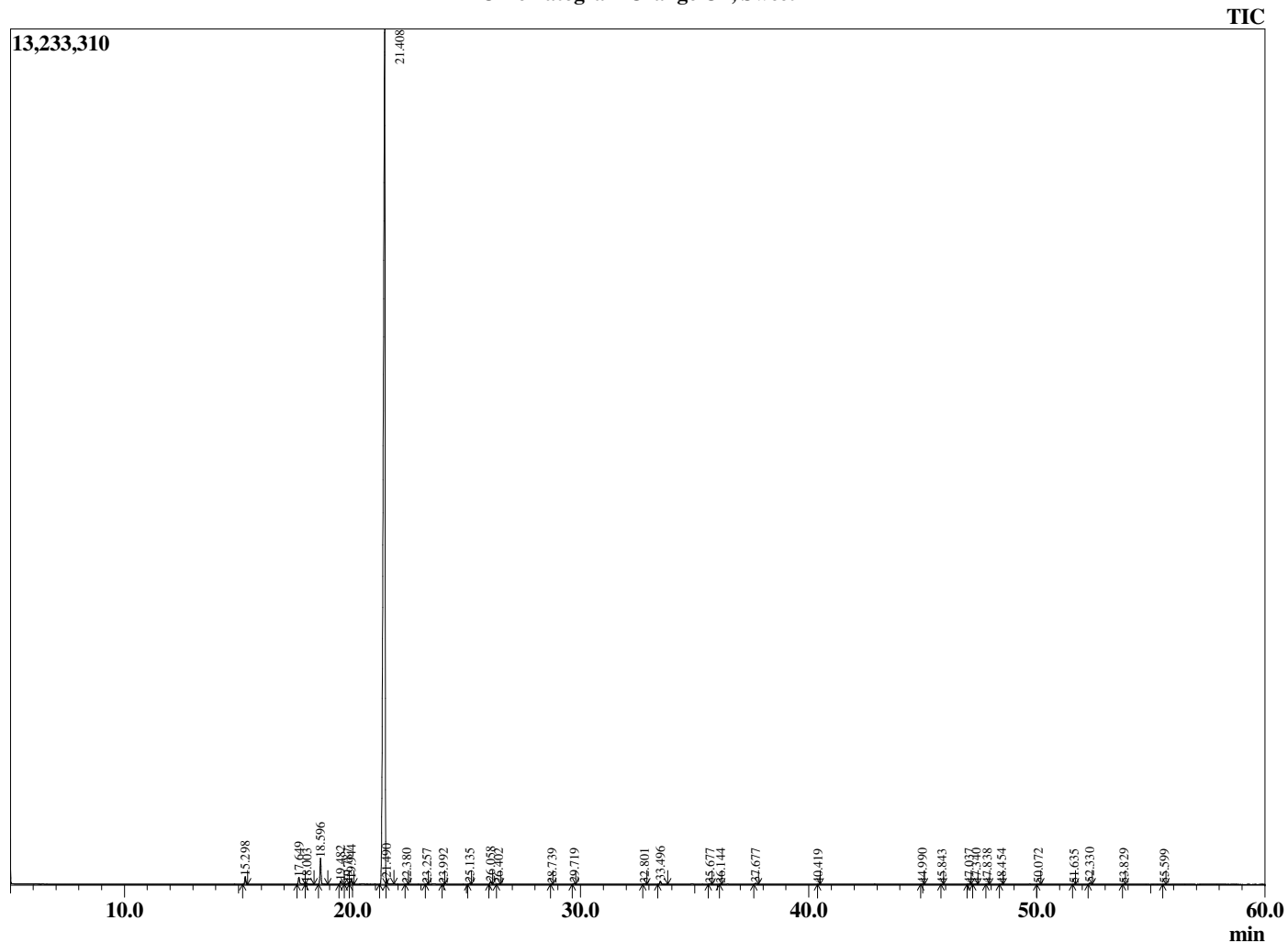


Peak Report TIC

R.Time	Name	Area%
15.298	Pinene <alpha>	0.51
17.649	Sabinene	0.59
18.003	Pinene <beta>	0.08
18.596	Myrcene	1.79
19.482	Octanal	0.23
19.787	Phellandrene <alpha>	0.06
19.944	3-Carene	0.33
21.408	Limonene	94.63
21.490	Phellandrene <beta>	0.35
22.380	Ocimene <E-beta>	0.02
23.257	Terpinene <gamma>	0.04
23.992	1-Octanol	0.02
25.135	Terpinolene	0.06
26.058	Linalool	0.21
26.402	Nonanal	0.04
28.739	Limonene oxide	0.02
29.719	Citronellal	0.05
32.801	Terpineol <alpha>	0.05
33.496	Decanal	0.27
35.677	Neral	0.05
36.144	Carvone	0.01
37.677	Geranial	0.09
40.419	Undecanal	0.01
44.990	Copaene <alpha>	0.04
45.843	Elemene <beta>	0.02
47.037	Dodecanal	0.06
47.340	Caryophyllene <cis>	0.04
47.838	Caryophyllene <trans-beta>	0.05
48.454	Copaene <beta>	0.03
50.072	Humulene <alpha>	0.03
51.635	Germacrene D	0.02
52.330	Valencene	0.13
53.829	Cadinene <delta>	0.03
55.599	Elemol <alpha>	0.02
		100.00

This report is valid for 1 year from the analyzed date.

Chromatogram Orange Oil, Sweet



Comments:

The analysis of this Orange Oil, Sweet batch sample meets the expected chemical profile for authentic essential oil of *Citrus sinensis*. No contamination or adulteration was detected.