

Sample Information

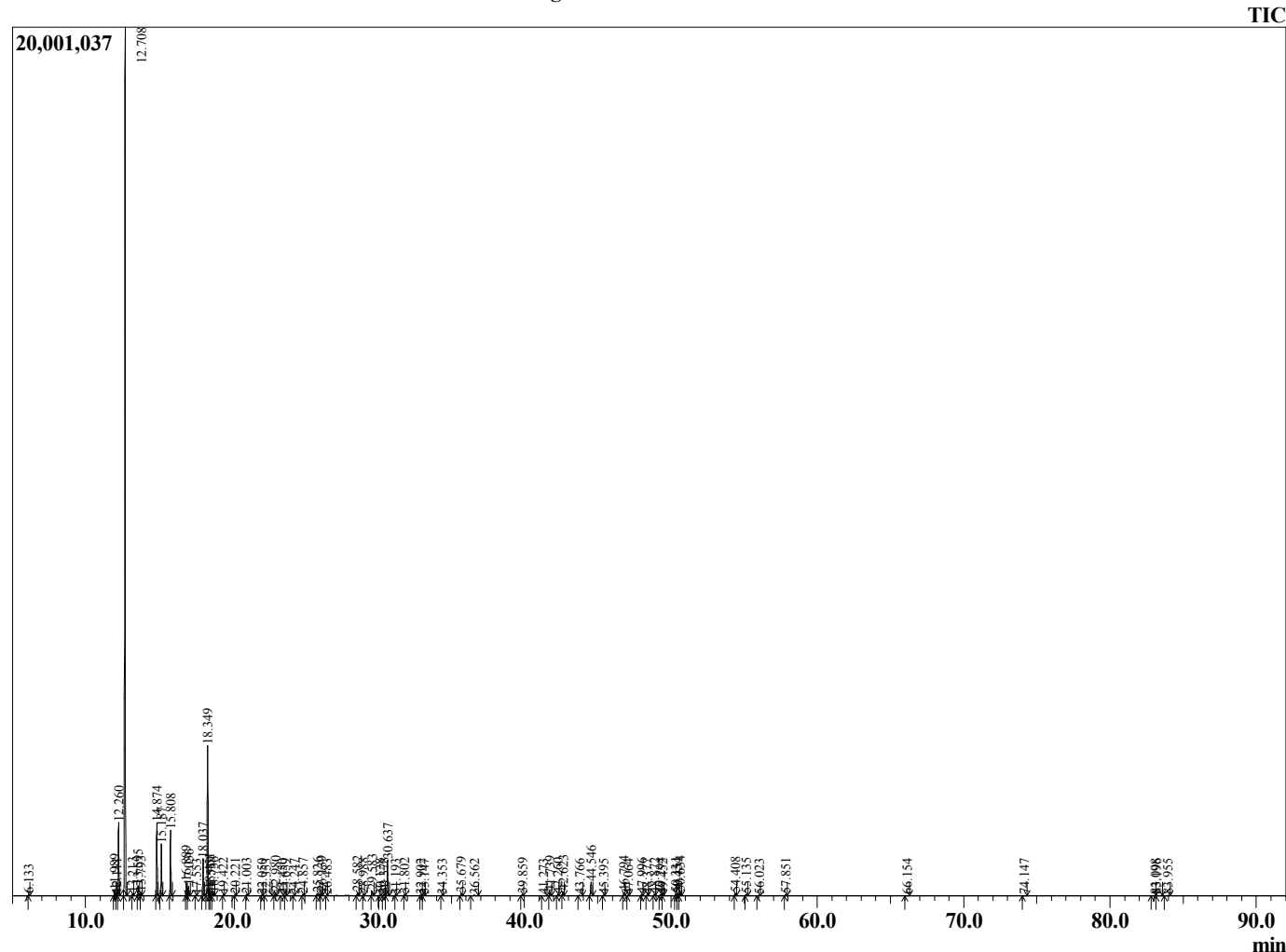
Analyzed by : Dr. Robert S. Pappas
 Analyzed : 8/27/2019 11:57:11 AM
 Sample Type : Essential Oil
 Sample Name : Boswellia carterii - Revive
 Sample ID : E0C0812A
 Injection Volume : 0.10
 Instrument ID : GC-2



Peak Report TIC

R.Time	Name	Area%
6.133	Toluene	0.04
11.989	Hashishene	0.29
12.111	Tricyclene	0.07
12.260	alpha-Thujene	4.40
12.708	alpha-Pinene	56.65
13.213	Thuja-2,4(10)diene	0.11
13.595	Camphene	0.63
13.793	Verbenene	0.18
14.874	Sabinene	4.71
15.187	beta-Pinene	3.40
15.808	Myrcene	4.20
16.889	alpha-Phellandrene	0.89
17.036	3-Carene	0.66
17.553	alpha-Terpinene	0.04
18.037	para-Cymene	2.61
18.349	Limonene	10.51
18.451	beta-Phellandrene	0.39
18.539	1,8-Cineole	0.15
18.736	Z-beta-Ocimene	0.18
19.422	E-beta-Ocimene	0.08
20.221	gamma-Terpinene	0.09
21.003	1-Octanol	0.11
22.050	Terpinolene	0.06
22.353	Dehydro-p-cymene	0.07
22.980	Linalool	0.28
23.450	Solustrerol	0.03
23.659	Thujol	0.06
24.247	alpha-Thujone	0.04
24.857	alpha-Campholenaldehyde	0.09
25.826	trans-Pinocarveol	0.20
26.139	trans-Verbenol	0.22
26.483	p-Mentha-1,5-dien-8-ol	0.04
28.582	Terpinen-4-ol	0.25
28.988	p-Cymen-8-ol	0.09
29.583	alpha-Terpineol	0.44
30.128	Frankincense unidentified	0.05
30.378	Verbenone	0.12
30.637	Octyl acetate	2.87
31.193	trans-Carveol	0.05
31.802	1-Methoxydecane	0.11
32.902	Carvone	0.06
33.147	Frankincense unidentified	0.06
34.353	3,5-Dimethoxytoluene	0.05
35.679	Bornyl acetate	0.18
36.562	Frankincense unidentified	0.06
39.859	alph-Cubebene	0.10
41.273	Cyclosativene	0.03
41.739	alpha-Copaene	0.31
42.260	beta-Bourbonene	0.08
42.623	beta-Elmene	0.34
43.766	alpha-Gurjunene	0.04
44.546	beta-Caryophyllene	1.24
45.395	trans-alpha-Bergamotene	0.04
46.794	alpha-Humulene	0.26
47.064	Alloaromadendrene	0.06
47.996	trans-Cadina-1(6),4-diene	0.07
48.377	Germacrene D	0.06
48.872	beta-Selinene	0.11
49.294	alpha-Selinene	0.15
49.452	alpha-Murolene	0.06
50.331	gamma-Cadinene	0.15
50.454	4-epi-Cubedol	0.08

Chromatogram Boswellia carterii - Revive



Comments:

The analysis of this Frankincense - carterii batch sample meets the expected chemical profile for authentic essential oil of *Boswellia carterii*. No contamination or adulteration was detected. The results provided in this GCMS quality analysis reflect the chemical composition of the oil and lot referenced above on the date of analysis.

R.Time	Name	Area%
50.634	delta-Cadinene	0.23
54.408	Caryophyllene oxide	0.20
55.135	Viridiflorol	0.11
56.023	Humulene epoxide II	0.06
57.851	alpha-Cadinol	0.11
66.154	alpha-Phellandrene dimer	0.03
74.147	beta-Elemene dimer	0.02
83.098	Incensole	0.03
83.196	Serratol	0.08
83.955	Frankincense unidentified	0.05
		100.00