

Sample Information

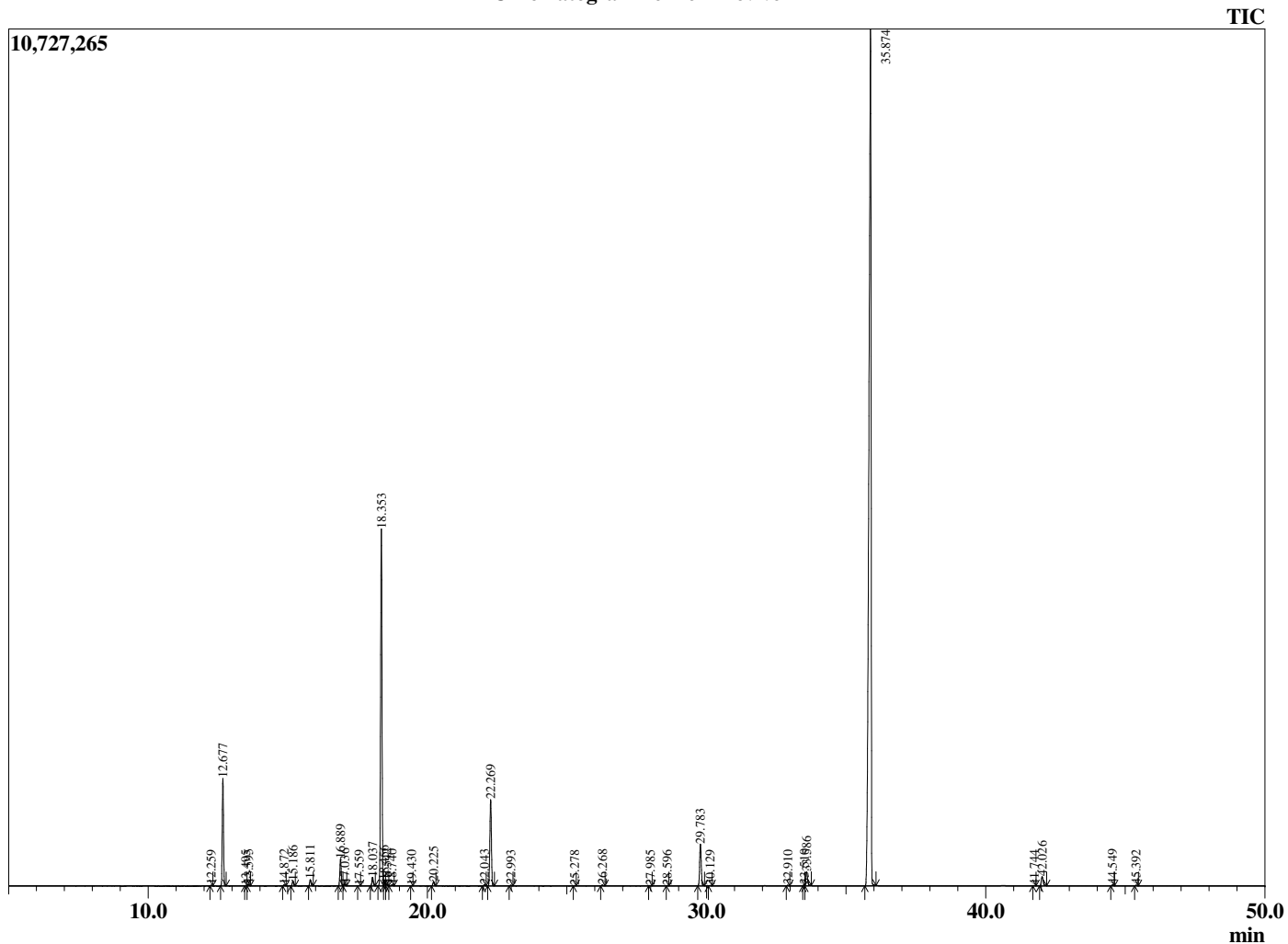
Analyzed by : Dr. Robert S. Pappas
 Analyzed : 8/26/2019 8:27:34 PM
 Sample Type : Essential Oil
 Sample Name : Fennel - Revive
 Sample ID : E0C0701F
 Injection Volume : 0.10
 Instrument ID : GC-4



Peak Report TIC

R.Time	Name	Area%
12.259	alpha-Thujene	0.03
12.677	alpha-Pinene	4.69
13.495	alpha-Fenchene	0.01
13.595	Camphene	0.07
14.872	Sabinene	0.05
15.186	beta-Pinene	0.25
15.811	Myrcene	0.30
16.889	alpha-Phellandrene	1.27
17.036	delta-3-Carene	0.09
17.559	alpha-Terpinene	0.02
18.037	para-Cymene	0.44
18.353	Limonene	17.91
18.456	beta-Phellandrene	0.23
18.542	1,8-Cineole	0.10
18.740	cis-beta-Ocimene	0.05
19.430	trans-beta-Ocimene	0.01
20.225	gamma-Terpinene	0.21
22.043	Terpinolene	0.06
22.269	Fenchone	4.60
22.993	Linalool	0.04
25.278	cis-Limonene oxide	0.01
26.268	Camphor	0.05
27.985	Borneol	0.02
28.596	Terpinen-4-ol	0.01
29.783	Estragole	2.40
30.129	alpha-Phellandrene epoxide	0.02
32.910	Carvone	0.03
33.510	(Z)-Anethole	0.05
33.586	para-Anisaldehyde	0.86
35.874	(E)-Anethole	65.45
41.744	alpha-Copaene	0.01
42.026	para-Acetonylanisole	0.60
44.549	beta-Caryophyllene	0.04
45.392	trans-alpha-Bergamotene	0.03
		100.00

Chromatogram Fennel - Revive



Comments:

The analysis of this Fennel, Sweet batch sample meets the expected chemical profile for authentic essential oil of *Foeniculum vulgare*. No contamination or adulteration was detected.

The results provided in this GCMS quality analysis reflect the chemical composition of the oil and lot referenced above on the date of analysis.