

Sample Information

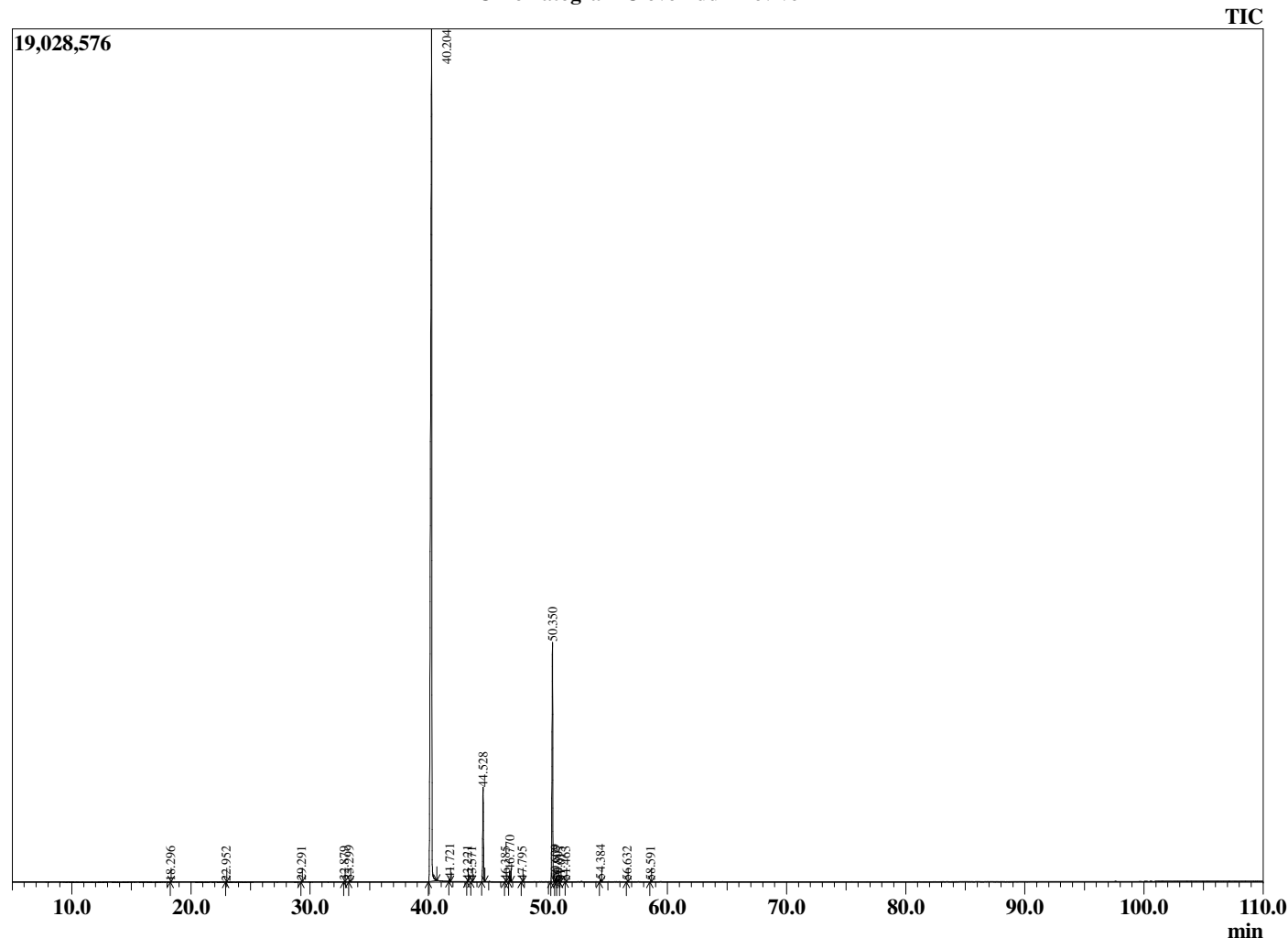
Analyzed by : Dr. Robert S. Pappas
 Analyzed : 7/26/2019 9:29:05 PM
 Sample Type : Essential Oil
 Sample Name : Clove Bud - Revive
 Sample ID : E0C0724D
 Injection Volume : 0.10
 Instrument ID: : GC-4



Peak Report TIC

R.Time	Name	Area%
18.296	Limonene	0.01
22.952	Linalool	0.01
29.291	Methyl salicylate	0.04
32.879	Carvone	0.02
33.299	Chavicol	0.06
40.204	Eugenol	79.18
41.721	alpha-Copaene	0.14
43.221	Methyleugenol	0.03
43.571	Unidentified	0.02
44.528	beta-Caryophyllene	5.39
46.385	Humulen-(v1)	0.02
46.770	alpha-Humulene	0.63
47.795	trans-Cadina-1(6),4-diene	0.03
50.350	Eugenyl acetate	13.98
50.609	delta-Cadinene	0.15
50.807	cis-Calamenene	0.07
51.015	Unidentified	0.02
51.463	trans-Cadine-1,4-diene	0.02
54.384	Caryophyllene oxide	0.13
56.632	Unidentified	0.03
58.591	14-Hydroxy-9-epi-Z-Caryophyllene	0.03
		100.00

Chromatogram Clove Bud - Revive



Comments:

The analysis of this Clove Bud batch sample meets the expected chemical profile for authentic essential oil of *Eugenia caryophyllata*. No contamination or adulteration was detected. The results provided in this GCMS quality analysis reflect the chemical composition of the oil and lot referenced above on the date of analysis.