

Sample Information

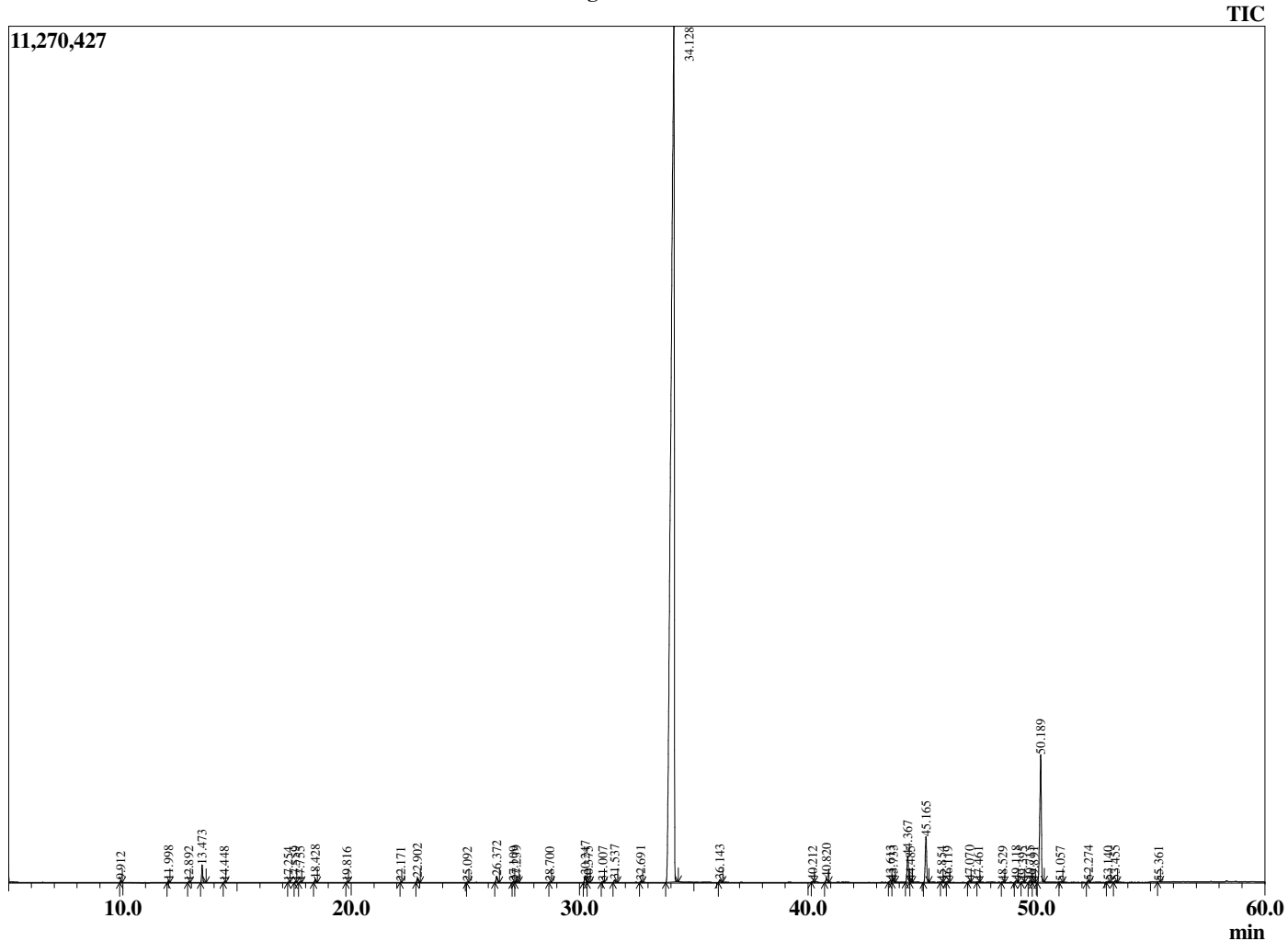
Analyzed by : Dr. Robert S. Pappas
 Analyzed : 5/1/2019 5:22:00 PM
 Sample Type : Essential Oil
 Sample Name : Cassia - Revive
 Sample ID : E0C0305X
 Injection Volume : 0.10
 Instrument ID : GC-3



Peak Report TIC

R.Time	Name	Area%
9.912	Styrene	0.07
11.998	alpha-Pinene	0.05
12.892	Camphene	0.02
13.473	Benzaldehyde	0.57
14.448	beta-Pinene	0.02
17.254	para-Cymene	0.01
17.559	Limonene	0.02
17.755	1,8-Cineole	0.02
18.428	Salicylaldehyde	0.12
19.816	Acetophenone	0.01
22.171	Linalool	0.01
22.902	Phenethyl alcohol	0.16
25.092	2-Methylbenzofuran	0.01
26.372	Hydrocinnamaldehyde	0.25
27.109	Borneol	0.03
27.239	2-Methylbenzofuran isomer	0.07
28.700	alpha-Terpineol	0.01
30.247	(Z)-Cinnamaldehyde	0.29
30.375	Unidentified	0.03
31.007	Hydrocinnamic alcohol	0.04
31.537	ortho-Anisaldehyde	0.12
32.691	2-Phenethyl acetate	0.06
34.128	(E)-Cinnamaldehyde	87.45
36.143	(E)-Cinnamyl alcohol	0.11
40.212	Unidentified	0.04
40.820	alpha-Copaene	0.19
43.613	beta-Caryophyllene	0.10
43.733	Cinnamic acid	0.07
44.367	Coumarin	1.17
44.485	trans-alpha-Bergamotene	0.03
45.165	(E)-Cinnamyl acetate	1.98
45.854	alpha-Humulene	0.01
46.119	Alloaromadendrene	0.04
47.070	trans-Cadina-1(6),4-diene	0.06
47.461	Ar-Curcumene	0.03
48.529	alpha-Murolene	0.04
49.118	beta-Bisabolene	0.07
49.395	gamma-Cadinene	0.04
49.715	delta-Cadinene	0.08
49.891	cis-Calamenene	0.02
50.189	ortho-Methoxycinnamaldehyde	6.23
51.057	Unidentified	0.04
52.274	trans-Nerolidol	0.09
53.140	Spathulenol	0.04
53.455	Caryophyllene oxide	0.07
55.361	Tetradecanal	0.02
		100.00

Chromatogram Cassia - Revive



Comments:

The analysis of this Cassia batch sample meets the expected chemical profile for authentic essential oil of *Cinnamomum cassia*. No contamination or adulteration was detected. The results provided in this GCMS quality analysis reflect the chemical composition of the oil and lot referenced above on the date of analysis.