

Sample Information

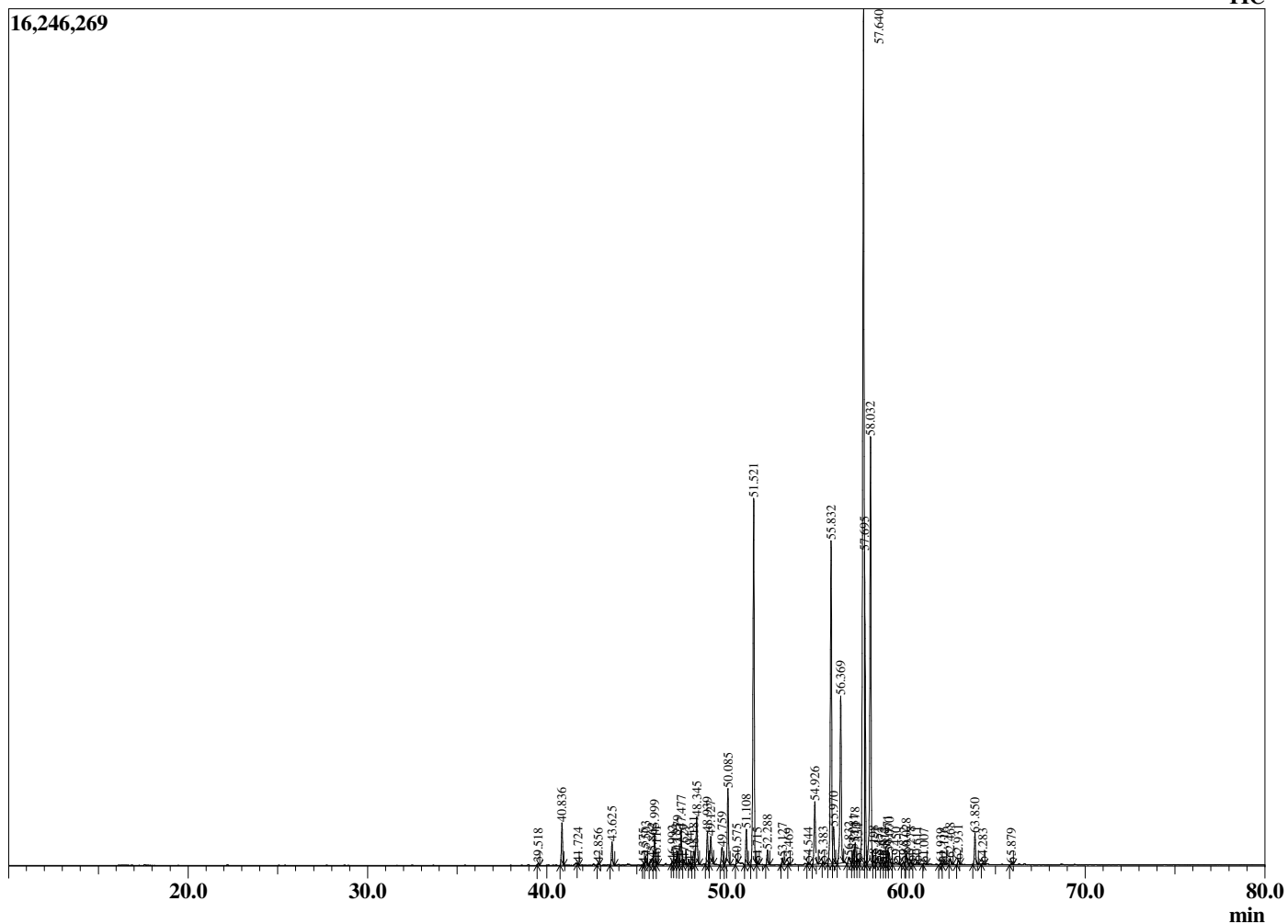
Analyzed by : Dr. Robert S. Pappas
 Analyzed : 8/7/2019 1:00:24 AM
 Sample Type : Essential Oil
 Sample Name : Amyris - Revive
 Sample ID : G0C0606B
 Injection Volume : 0.10
 Instrument ID : GC-3



Peak Report TIC

R.Time	Name	Area%
39.518	Unidentified	0.05
40.836	alpha-Copaene	1.22
41.724	beta-Elemene	0.04
42.856	alpha-Gurjunene	0.04
43.625	beta-Caryophyllene	0.68
45.375	epi-beta-Santalene	0.03
45.503	Unidentified	0.26
45.862	alpha-Humulene	0.30
45.999	beta-Acoradiene	0.92
46.111	beta-Santalene	0.10
46.992	beta-Chamigrene	0.09
47.183	Epizonarene	0.16
47.279	gamma-Curcumene	0.39
47.477	Ar-Curcumene	0.98
47.629	Unidentified	0.17
47.943	beta-Selinene	0.07
48.181	Eremophila-1(10),11-diene	0.44
48.345	alpha-Zingiberene	1.67
48.939	4-epi-cis-Dihydroagarofuran	0.93
49.127	beta-Bisabolene	1.01
49.759	Eudesma-3,7(11)-diene	0.69
50.085	beta-Sesquiphellandrene	2.34
50.575	alpha--Maaliene	0.12
51.108	Selina-3,7(11)-diene	1.06
51.521	Elemol	11.74
51.715	Unidentified	0.07
52.288	trans-Nerolidol	0.43
53.127	Unidentified	0.19
53.469	Caryophyllene oxide	0.04
54.544	Unidentified	0.07
54.926	5-epi-7-epi-alpha-Eudesmol	2.12
55.383	Zingiberenol	0.06
55.832	10-epi-gamma-Eudesmol	10.43
55.970	Guaiol	1.18
56.369	gamma-Eudesmol	5.65
56.832	Hinesol	0.34
57.081	Unidentified	0.44
57.178	Unidentified	0.69
57.334	Unidentified	0.19
57.640	Valerianol	30.27
57.695	alpha-Eudesmol	5.77
58.032	7-epi-alpha-Eudesmol	13.21
58.198	Unidentified	0.13
58.452	Unidentified	0.12
58.672	Unidentified	0.06
58.812	Unidentified	0.05
58.971	Unidentified	0.43
59.070	Unidentified	0.37
59.450	11-alpha-H-Himachal-4-en-1-beta-ol	0.14
59.872	Unidentified	0.08
60.028	Unidentified	0.35
60.278	Unidentified	0.07
60.611	Unidentified	0.08
61.007	(2E,6E)-Farnesol	0.05
61.939	Unidentified	0.04
62.116	Unidentified	0.07
62.468	Unidentified	0.19
62.931	Albicanol	0.14
63.850	Drimenol	0.93
64.283	Unidentified	0.04
65.879	Unidentified	0.04
		100.00

Chromatogram Amyris - Revive



Comments:

The analysis of this Amyris batch sample meets the expected chemical profile for authentic essential oil of *Amyris balsamifera*. No contamination or adulteration was detected. The results provided in this GCMS quality analysis reflect the chemical composition of the oil and lot referenced above on the date of analysis.